

Setting New Standards in Precision, Efficiency, and Reliability for Modern Grinding Applications.

Improve Processing Efficiency & Extend Roll Life

Scherer Inc. delivers advanced Replacement Kernel/Crop Processor Rolls for industry-leading OEMs, including Krone®, CLAAS®, and New Holland®. Our innovative technology ensures consistent particle size, improved starch digestibility, and increased roll life, enabling superior performance across multiple crops and conditions.

Standard Features for Replacement Rolls



Heat Treated & Hard Chrome Plated

Provides maximum durability and wear resistance.



Dual-Plane Dynamically Balanced:

Reduces vibration, ensuring smoother operation.



Higher Tolerances:

Scherer rolls are built to exceed industry-standard tolerances.



Replaceable Shaft:

Secured by reusable locking collars, simplifying maintenance and extending shaft life.



Meets OEM Specifications:

Built to exact specifications, drastically outlasting competitive rolls in tonnage and wear.

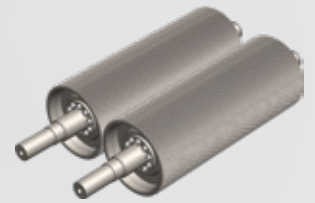
Rolls Available

KRONE®

Rolls are available for all BIG X® models (wide & narrow body).

- 10" rolls: 110, 145, 165 tooth combinations.
- 12" rolls: 135, 180 tooth combinations.

Designs: Twin-Cut, Sawtooth, Spiral Sawtooth, Spiral Twin-Cut.

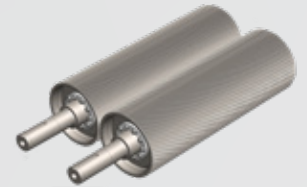


CLAAS®

Rolls for MCC-L KP's (2012 to current).

- 10" rolls: 110, 145, 165 tooth combinations.
- Available as roll & shaft only or complete drop-ins (includes bearings, hardware, and housings).

Designs: Twin-Cut, Sawtooth.



NEW HOLLAND®

Rolls for all FR Series models.

- 10" rolls: 110, 145, 165 tooth combinations. 12" rolls: 135, 180 tooth combinations.
- 7 Groove Drive Kits available (requires Scherer belt and offset grass shoot arm).

Designs: Standard CP, Twin-Cut, Sawtooth, Spiral Sawtooth, Spiral Twin-Cut.



For more information about the **Scherer Corrugation Rolls** please contact us at **800.883.9790**, or visit us at **SchererInc.com**





Versatility and Performance Features

- ✔ **Customizable Roll Grooving:**
Tailored for specific product requirements.
- ✔ **Interchangeable Roll Sets:**
Easily switch between materials for diverse applications.
- ✔ **Multi-Stage Grinding:**
Delivers precise particle size control for optimal results.

Precision Control & Longevity

- 🎯 **PLC System with HMI Interface:**
Real-time adjustments via an intuitive touchscreen.
- 🎯 **Wear-Monitoring System:**
Track wear in real time, extending roll life through proactive maintenance.
- 🎯 **Premium Chilled Iron Rolls:**
Engineered for heavy-duty use with spring protection for enhanced reliability.

Efficiency & Smart Integration

- ⚙️ **Energy-Efficient Design:**
Variable speed drives minimize energy use while maintaining performance.
- ⚙️ **Quick-Change Roller System:**
Roller System: Reduce downtime with rapid roller replacements.
- ⚙️ **IoT-Enabled:**
Monitor and control operations remotely via cloud-based analytics and a mobile app.



Tailored Solutions & Scalability

- Modular Design:**
Adapt your system as production demands evolve.
- Scalper & Feedroll Options:**
Choose from various configurations based on material requirements.
- 24/7 Support:**
Maximize your investment with dedicated customer support and training.

For more information about our **Replacement Kernel/Crop Processor Rolls** or to optimize your grinding operations, call **800.883.9790**, or visit us at **SchererInc.com**
Scherer Inc. Delivering Precision, Durability, and Innovation in Roller Technology.